



2024 SPONSORSHIP PACKAGE PLAYGROUNDS OF POSSIBILITY

Discovery Early Learning & Care is an essential part of the lives of many parents and guardians who walk through our doors. Every time you drop off your child, you put your trust in us that we will give your child proper care and ample opportunity to learn and grow through curiosity and collaboration. Our playgrounds allow children a safe place to explore, play, and build relationship skills that will stay with them throughout their lives. Each day is a new experience, and we aim to provide your child with wonderful stories to share with you on the way home after pick-up.

100% of all proceeds support new playground builds at Discovery Early Learning & Care.

PLAY IS THE FOUNDATION FOR ALL LEARNING.

BEFORE



AFTER POTENTIAL



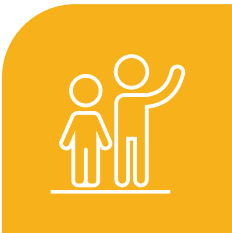
NEW PLAYGROUNDS WILL BE DESIGNED AND BUILT
BY BIENENSTOCK NATURAL PLAYGROUNDS INC.

As a not-for-profit organization, Discovery Early Learning & Care strongly advocates for the importance of play, leadership, lifelong learning, and inclusion among the children in our communities, their families, and industry professionals. We take every opportunity to extend learning from the classroom to our outdoor playgrounds.

Playgrounds are more than just fun structures. They play an integral role in early childhood learning and development, encouraging children to test their limits, cooperate with others, and learn something new about themselves every day.

We are requesting your support to continue this legacy by revitalizing our playgrounds, a new playground is about more than just replacing outdated equipment. It's about creating enriched learning spaces with innovative design, a special focus on safety enhancements, and utilizing sustainable materials that are environmentally friendly and durable. Investing in a new playground is an investment in the families we serve. It strengthens our community as a whole and fosters positive outcomes for generations to come.

Investing in the new playgrounds at Discovery Early Learning & Care allows you to make a lasting impact in the lives of children and families in our community today and for generations to come, all while mutually benefitting your sponsorship, monetarily and socially.



Investing in your employees' childcare facilities supports wellbeing beyond the workplace, fostering better work-life balance and boosting employee morale.



Strengthening our community by creating a sense of unity by working together for a common goal of assisting in much-needed enhancements.

SPONSOR RECOGNITION

| GIVING LEVEL | Voting on playground name “St.John’s playground is presented by [voted name]” | Logo or name featured on outdoor signage at the playground | Opportunity to leverage your business by jointly promoting business initiatives or promotions | Logo or name featured on the donor recognition board (high-traffic location showcase) | Recognition online, including logo placement (with direct link to your company) on our website, mentions in social media posts and in our newsletter | Your logo or name on materials post-fund raising campaign |
|---|--|--|---|---|--|---|
| VISIONARY Above \$15,000 | ✓ | ✓ | ✓ | ✓ | ✓ | ✓ |
| TRAILBLAZER Above \$10,000 | | ✓ | ✓ | ✓ | ✓ | ✓ |
| PIONEER \$5,000 - \$9,999 | | | ✓ | ✓ | ✓ | ✓ |
| CHAMPION \$1,000 - \$4,000 | | | | ✓ | ✓ | ✓ |
| NURTURER \$500 - \$999 | | | | | ✓ | ✓ |
| FRIEND OF DISCOVERY EARLY LEARNING & CARE \$100 - \$499 | | | | | ✓ | |

OFFICIAL UNVEILING CEREMONY

In addition to the recognition incentives outlined, all giving levels will be invited to attend the Unveiling Ceremony of the new playground.



Please contact Tracy Saarikoski, Executive Director
by calling **705.693.5282**
or filling out the contact form on discoverycare.ca